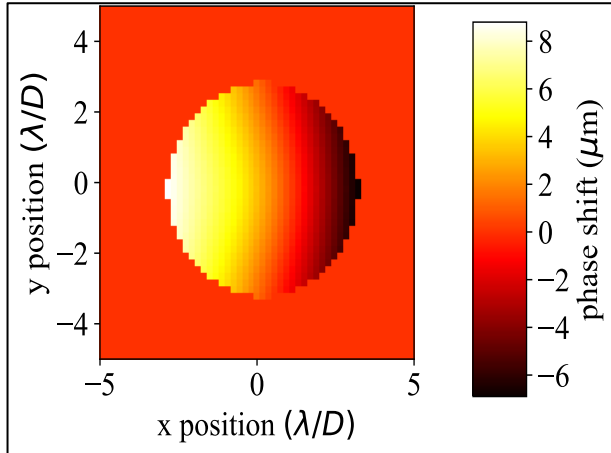


FAST—Fast Atmospheric SCC Technique

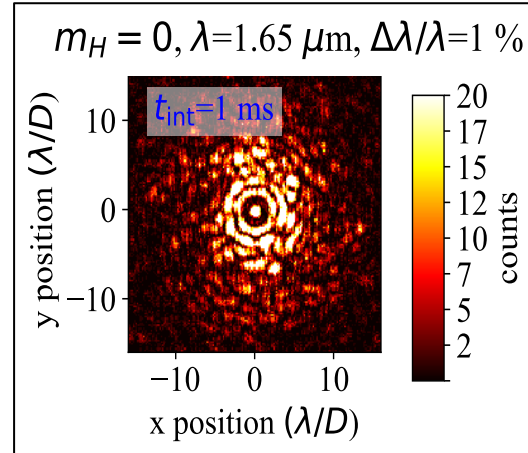
SCC (Self-Coherent Camera):

a way to measure/subtract stellar aberrations, “masquerading” as exoplanets, that prevent real exoplanets from being seen.

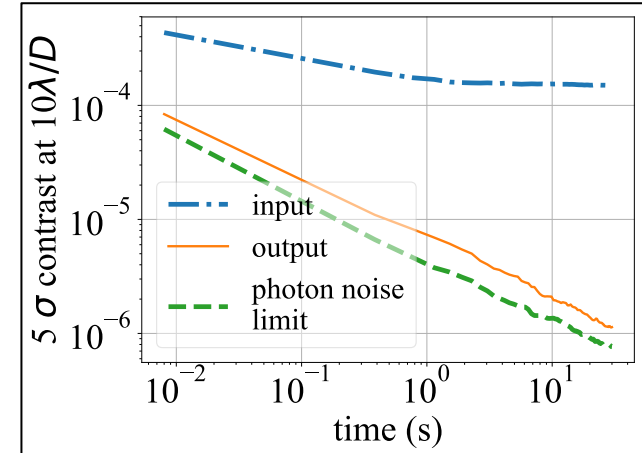
1. new coronagraph



2. Take millisecond timescale exposures



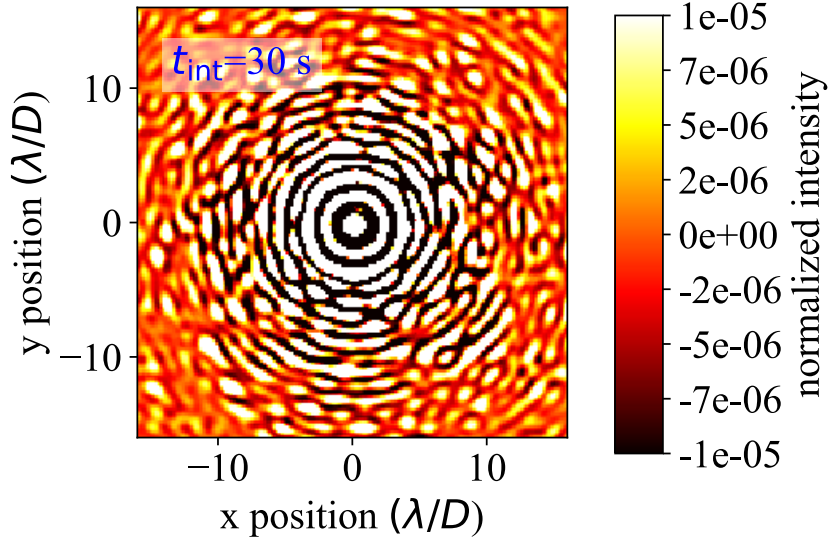
3. stack subtracted images from step 2



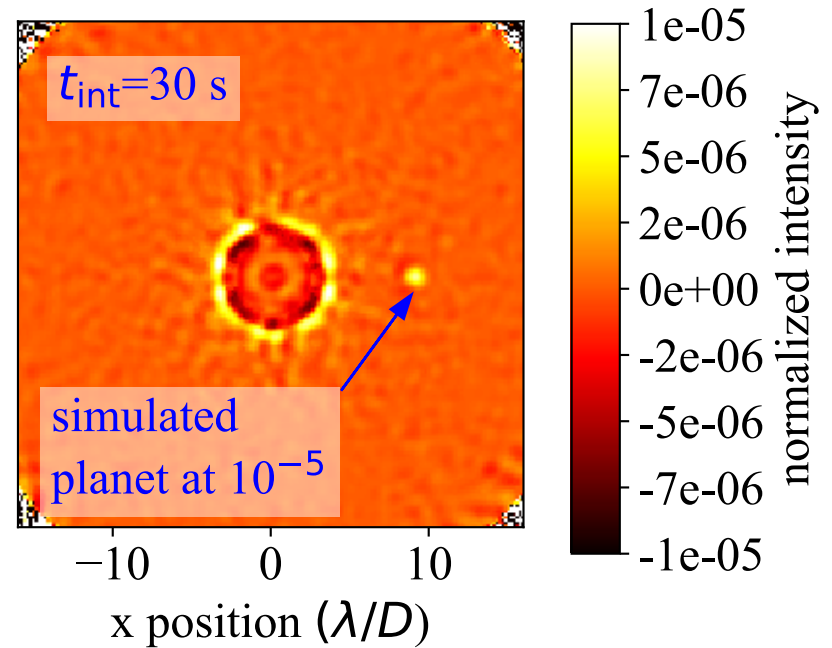
Gerard, B., Marois, C.,
Galicher, R., AJ, accepted

Gerard, B., Marois, C., Galicher, R.,
Veran, J.-P., Proc. SPIE, 2018

Before



After



Extrapolating for an hour of observing time, 100 times better (in raw contrast) than GPI gets now