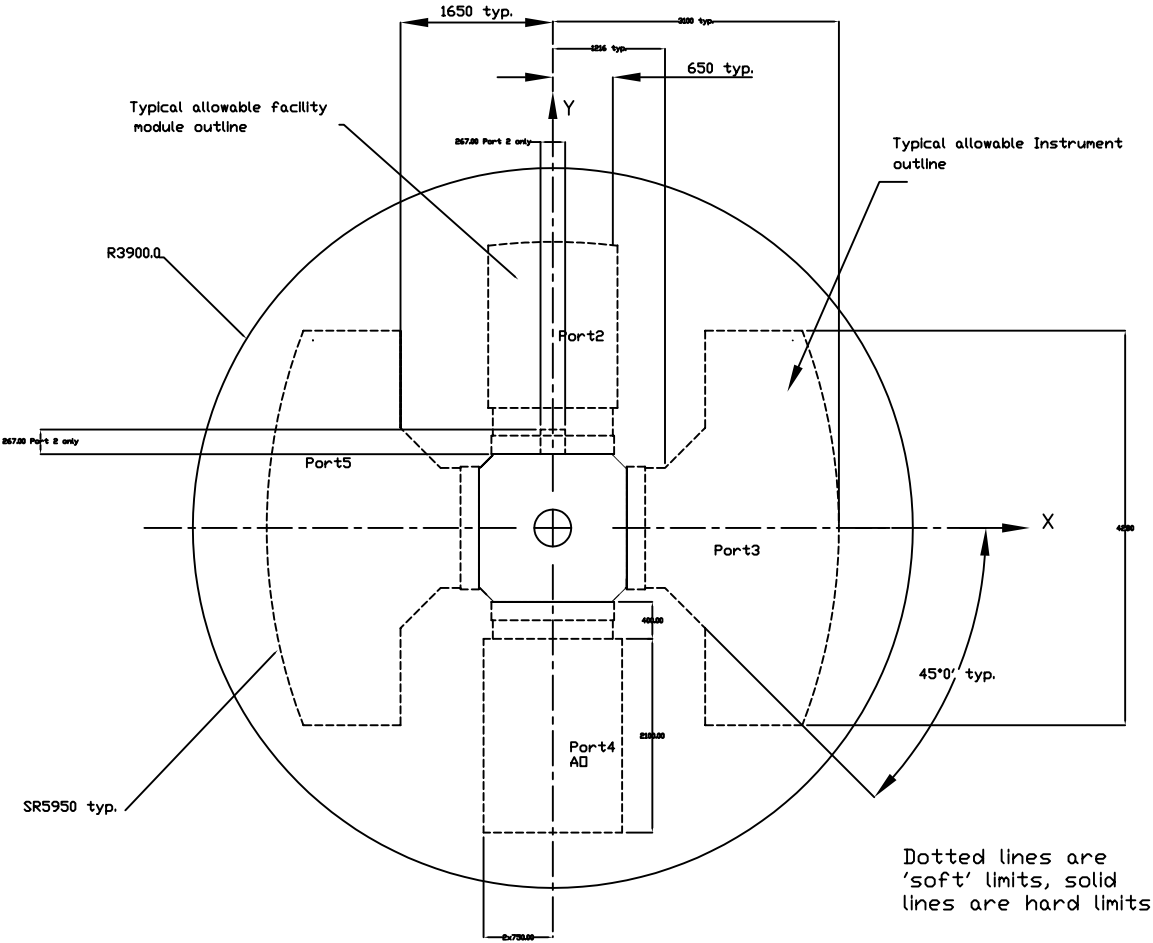


NOTES, UNLESS OTHERWISE SPECIFIED:

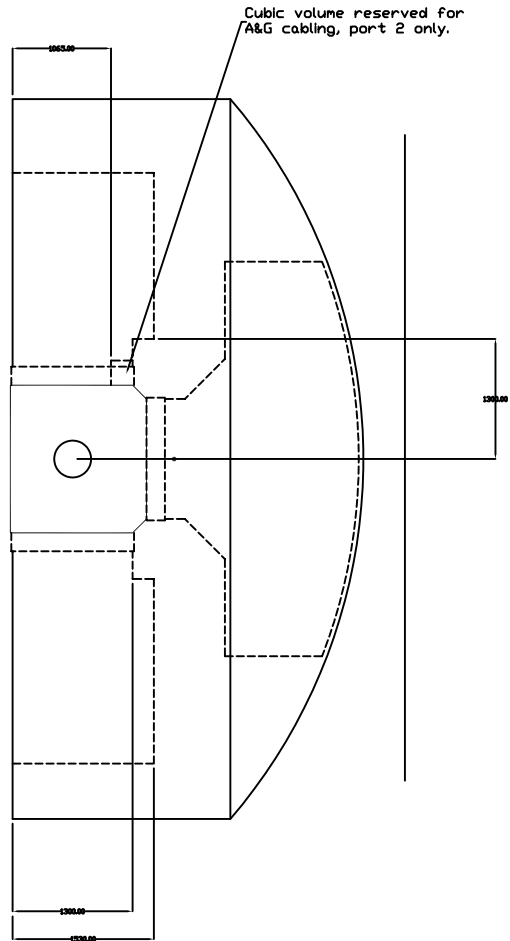
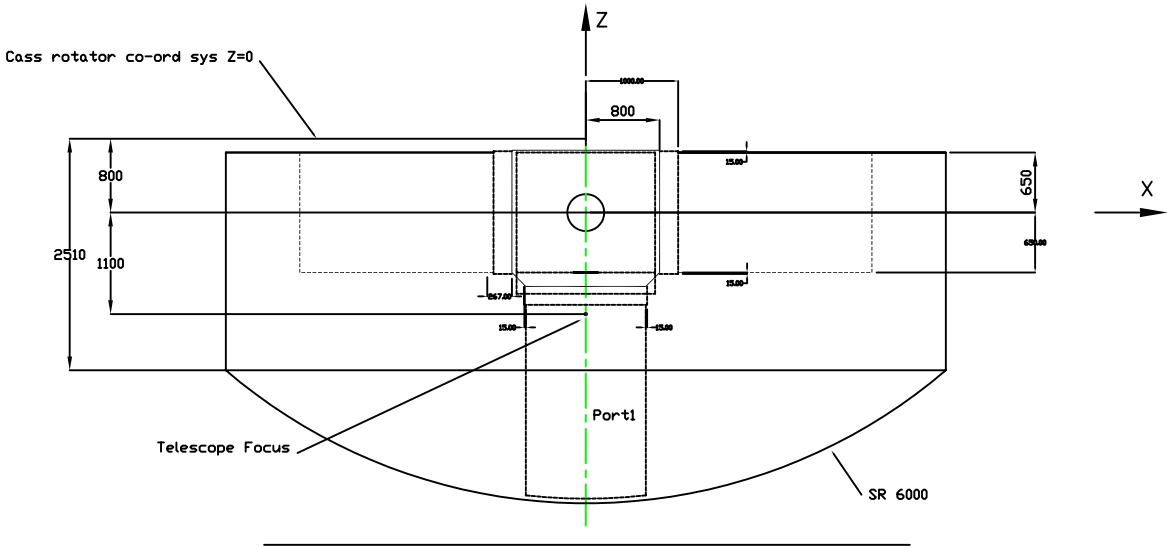


Allowable instrument space envelopes

Cassegrain Rotator Co-ord Sytem XY plane



Cassegrain Rotator Co-ord System XZ plane. Rotator angle = -90



Detail is identical for ports 2&4

Note 1. Handling fixtures may extend beyond these envelopes depending on size and position and whether or not they are removable. See ICD 1.9/2.7 Science and facility instruments to facility handling equipment. Contact IGPD for details.

REVISIONS			
REV	DESCRIPTION	DATE	APPROVED
B	Increase space at ISS interface and included space allowance for A&G cables on ports 2&4 Space envelope extended on ports 2&4	4.23.97	DM
C	Modify AD space envelope	12.14.98	DM
D	Modify AD space envelope	06.20.01	JS

Port definitions need re-work

-1 ITEM QTY		PART OR IDENTIFYING NUMBER		NOMENCLATURE OR DESCRIPTION		PROCUREMENT SPECIFICATION		NOTES	
				PARTS LIST					
				DRAWN		DATE			
				CHK		13.1.98			
				ENG					
				APVD					
				QA					
				CONTRACT					
				RELEASE					
				SCALE		1/1			
				APPLICATION					

UNLESS OTHERWISE SPECIFIED

* DIMENSIONS ARE IN MILLIMETERS

HOLE TOLERANCES

SIZE

SCALE

1/1

89-GP-1000-0004

REV D

1 OF 1

GEMINI 8-M Telescopes Project

Available cassegrain instrument space

89-GP-1000-0004

REV D