



# LARGE AND LONG PROGRAM NEWSLETTER

## In this Update:

1. Introduction
2. New 2016 LLPs
3. 2017A Targets
4. LLP web page redesign
5. Whom Should I Contact?

## Important Dates:

**October 21, 2016** - Deadline for returning xmls containing details of the Semester 2017A observations requests.

**December 2016** - Announcement of Opportunity for the 2017 LLP Proposal cycle.

**February 2017** - Letters of Opportunity due for 2017 LLP Proposals.

**March 31, 2017** - New 2017 LLP proposals due.

**March 31, 2017** - Annual Reports due for existing LLPs

## 1. Introduction

Hello! For those of you who do not yet know me, allow me to introduce myself. I'm your LLP Coordinator, essentially heading up LLPs at the Observatory and assisting you in any way that I am able. I'm an Associate Scientist in my 11th year at Gemini South and I am also the Gemini Project Scientist for GHOST, our upcoming high-resolution optical spectrograph. Until recently, I've also been the Chair of the International Time Allocation Committee. Now that the ITAC Chair is behind me, I have more time to devote towards LLPs and I have several initiatives to improve the program for you and the community-at-large. One first step is this newsletter. This newsletter is designed to provide updates, important dates, and supplemental information for existing LLP programs. I expect that there will be a new newsletter 3-4 time per year and I am happy to receive feedback on items you would like to see in future issues. Thanks for reading!

Steve Margheim



## 2. New 2016 LLPs

For the 2016 cycle, 5 new LLPs were accepted, including a visiting instrument (IGRINS) program for Semester 2018A.

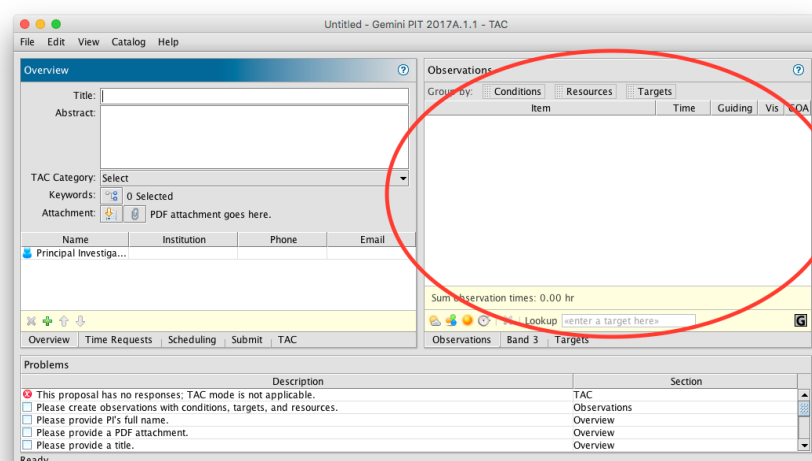
- **DES Supernova Cosmology** - PI: Ryan Foley, University of Illinois at Urbana-Champaign
- **Observational Characterization of Active Main-Belt Comets and Main-Belt Comet Nuclei** - PI: Henry Hsieh, Planetary Science Institute
- **Young Star & Protoplanetary Disk Evolution with High- Resolution IR Spectroscopy** - PI: Gregory Mace, McDonald Observatory, University of Texas at Austin
- **Scattered Light imaging of YSOs: Probing the Fundamental Stages of Planet Formation** - PI: John Monnier, University of Michigan
- **Addressing a Bias in the Relation Between Galaxies and Their Central Black Holes** - PI: Jonelle Walsh, Texas A&M University

## 3. Semester 2017A Targets

For programs with Semester 2017A allocations, Phase I observational details will be due October 21. I will send each applicable program an updated Phase I xml. Only the Observations section of the proposal needs to be updated with the targets and instrument resources required for Semester 2017A. You will need the 2017A.1.1 version of the Phase I Tool (PIT) to update your target information. The new PIT can be downloaded here: <http://files.gemini.edu/-software/phase1/2017A.1.1/>. More information on the PIT can be found on our website, <http://www.gemini.edu/sciops/observing-gemini/proposal-submission/phase-i-tool-pit>.

If your program has more potential targets than can be observed within your semester allocation, I encourage you to overfill your request in your Phase I xml. This can provide additional flexibility in program scheduling during the queue merging process at ITAC, especially for Band 2 programs. If not all program targets have equal priorities, please send me a description of your priorities, must-observe targets, etc along with your completed xml.

Please return your xml directly to me, [smargheim@gemini.edu](mailto:smargheim@gemini.edu), no later than October 21, 2016. Please let me know if you have any questions.



## 4. LLP Webpage Redesign

The Large and Long Program web pages will be redesigned ahead of the 2017 Announcement of Opportunity. The new pages will feature updated information, including more information for existing LLPs. The web pages on current and past LLPs will also be expanded, with each LLP having a separate page and will include full Co-Investigator listings. We also want to start highlighting your results, publications, and data products on our web pages. As we move forward with the web design, I will be contacting each program for more information as needed.

## 5. Whom Should I Contact About...?

In order to facilitate a timely response to any questions or issues you may have, please refer to the following guidelines on whom to contact about your program.

- **Contact Scientists:** The CS is your point of contact for inquiries about your Phase II program and observations. They will be able to assist you in the definition of your observing sequences and optimization of your program for your science. We attempt to keep the same contact scientists attached to your program throughout the life of your LLP, but occasionally need to change the assignments due to change in personnel and rotation of duties; Please make sure to note your current contact scientist assignments at the start of the semester.
- **LLP Coordinator:** The LLP coordinator (smargheim@gemini.edu) is your point of contact for nearly every other issue. Any general questions about your LLP, your time allocations, reporting issues, etc should be sent to the LLP coordinator. ***If you are unsure whom to contact, contact the LLP coordinator.***
- **Head of Science Operations:** The Head of Science Operations is the point of contact for Priority Visitor scheduling. The Head of SciOps should also be contacted for target change approval requests during the semester, but please ensure you copy your contact scientists and the LLP coordinator on any such requests. The Heads of Science Operations, Gemini North and South are currently Sandy Leggett (sleggett@gemini.edu) and Rene Rutten (rrutten@gemini.edu).
- **Queue Coordinators:** In general, the queue coordinators should not be contacted directly. Any concerns about the scheduling and observation of your program should be directed to either your contact scientists or the LLP coordinator.