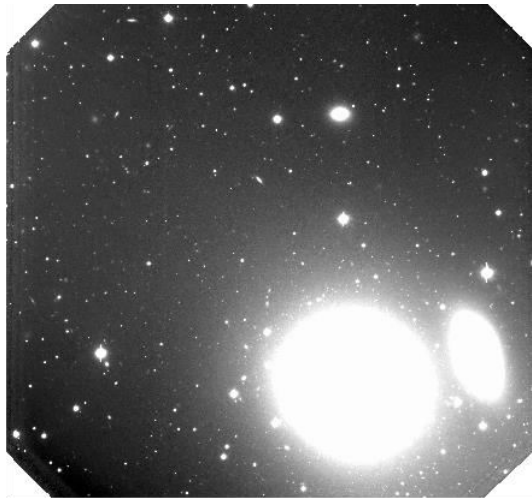


Globular cluster systems of massive elliptical galaxies in low-density environments with GMOS data

L. Bassino, A. Ennis, B. De Bórtoli & J. Caso

Universidad Nacional de La Plata
and Conicet, ARGENTINA

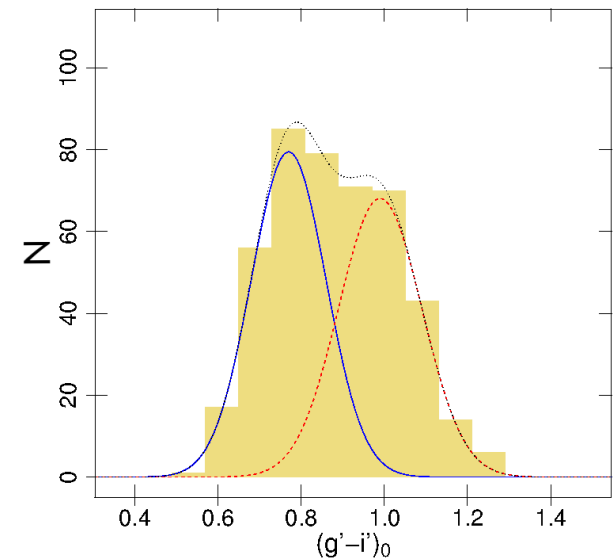


NGC 6876

NGC 6876: dominant galaxy of
the Pavo Group

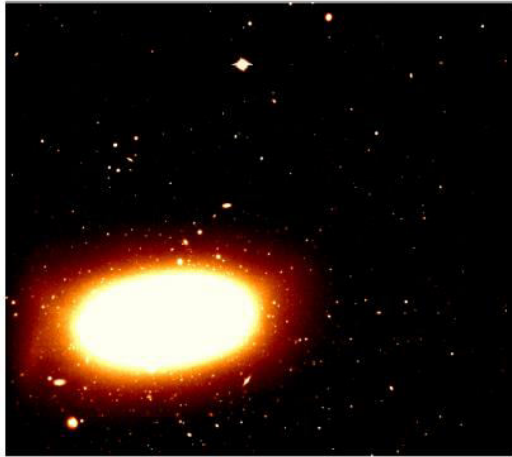
Total estimated population:

~ 10.000 globular clusters (GC)

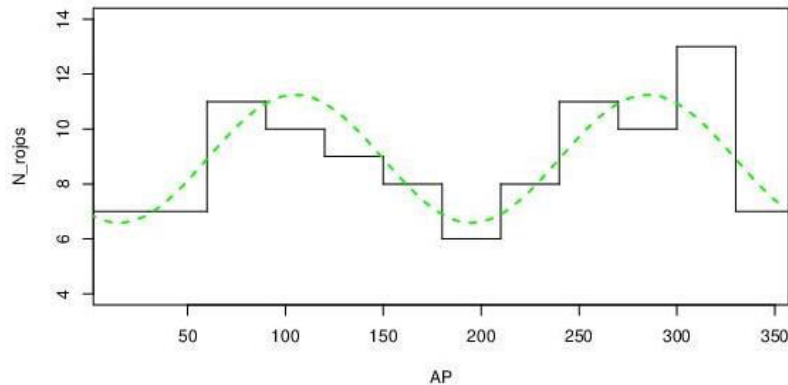


Bimodal color distribution
of GC candidates

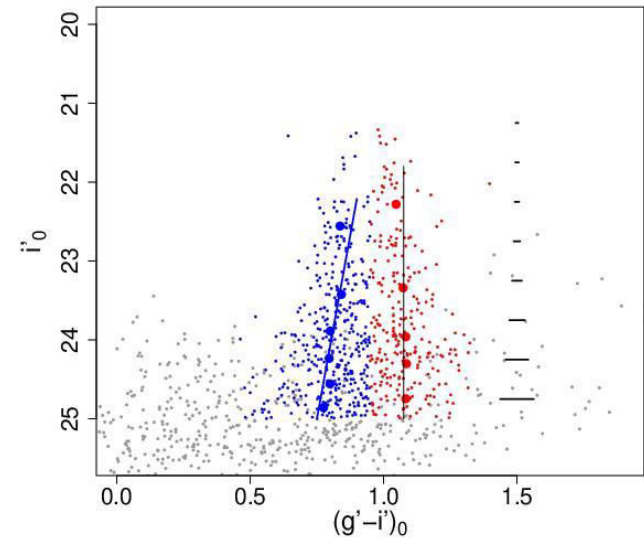
Globular cluster systems of massive elliptical galaxies in low-density environments with GMOS data



NGC 3613



Projected spatial distribution of metal-rich GCs: **similar ellipticity and PA** as the galaxy isophotes



Color-magnitude diagram of GC candidates

Metal-poor GCs get redder with increasing brightness (mass-metallicity relation or **"blue tilt"**)