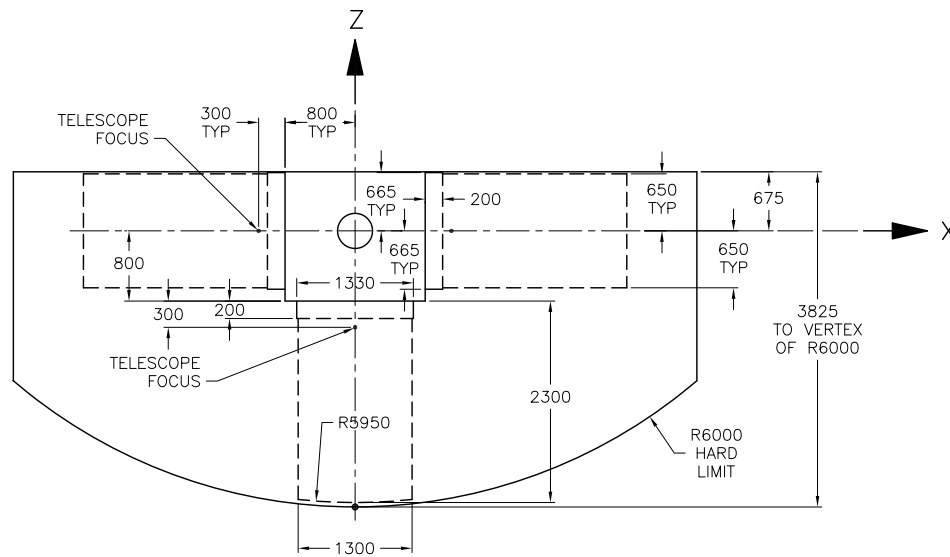
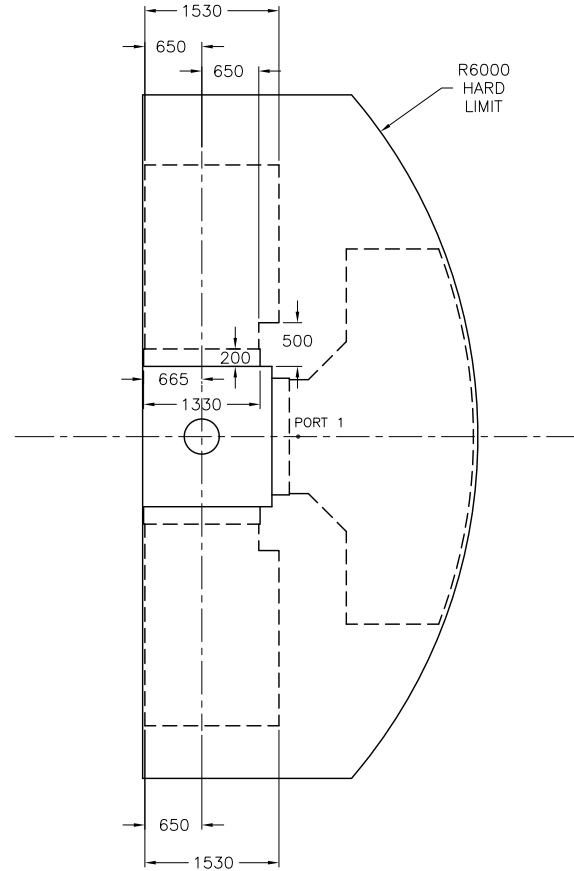
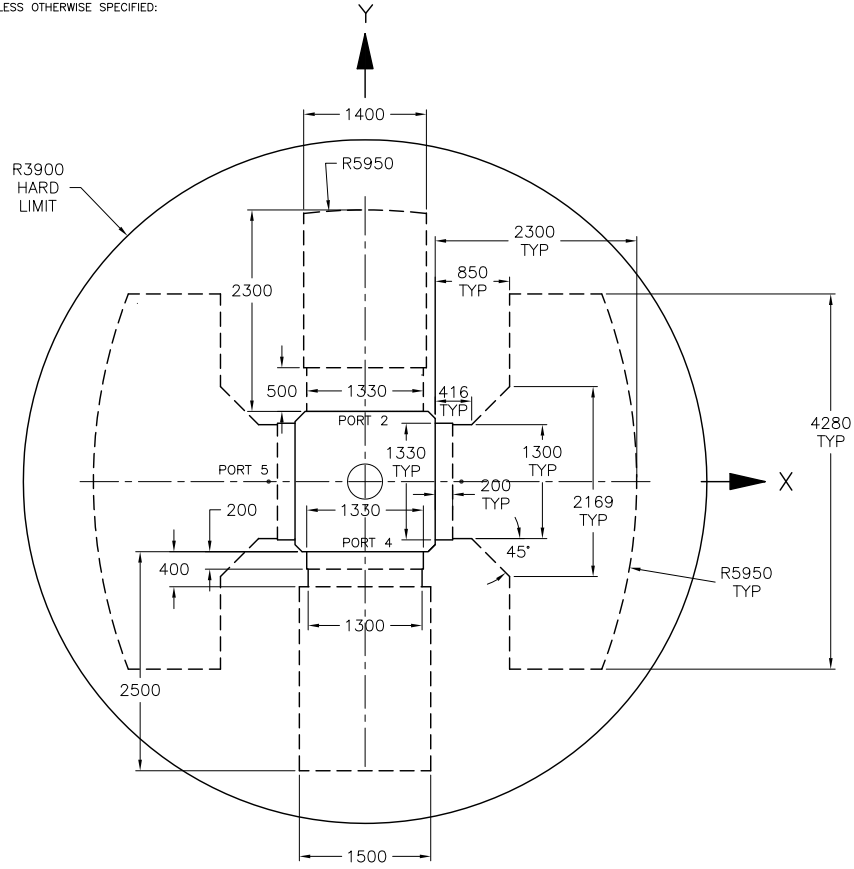


NOTES, UNLESS OTHERWISE SPECIFIED:



REVISIONS			
REV	DESCRIPTION	DATE	APPROVED
B	Increase space at ISS interface and included space allowance for A&G cables on ports 2&4. Space envelope extended on ports 2&4	4.23.97	DM
C	Modify AD space envelope	12.14.98	DM
D	Modify AD space envelope	06.20.01	JS
E	REDRAWN	05.15.14	G.PEREZ



NOTES:

- 1.- DOTTED LINES SHOW SOFT BOUNDARIES OF THE SPACE FOR INSTRUMENTS
- 2.- SOLID LINES SHOW HARD BOUNDARIES
- 3.- HANDLING FIXTURES MAY EXTEND BEYOND THESE BOUNDARIES, DEPENDING ON SIZE AND POSITION, AND WHETHER OR NOT THEY ARE REMOVABLE. SEE ICD 1.9/2.7 SCIENCE AND FACILITY HANDLING EQUIPMENT.

QTY	ITEM NO.	PART OR IDENTIFYING NUMBER	NOMENCLATURE OR DESCRIPTION	PROCUREMENT SPECIFICATION	NOTES
		PARTS LIST			
		UNLESS OTHERWISE SPECIFIED DIMENSIONS ARE IN MILLIMETERS			
		DRAWN: E. Montgomery DATE: 11.15.06			
		CHK: JZM			
		ENG: JZM			
		SR: JZM			
		CONTRACT: 89-GP-1000-0004			
		RELEASE: E			
		NEXT ASSY USED ON APPLICATION			
		GEMINI 8-M Telescopes Project			
		Sponsored by the Association of Universities for Research in Astronomy, Inc. (AURA) under cooperative agreement with the National Science Foundation			
		AVAILABLE CASSEGRAIN INSTRUMENT SPACE		DWG NO. 89-GP-1000-0004 SCALE 1/1	
				SHEET 1 OF 1 REV E	